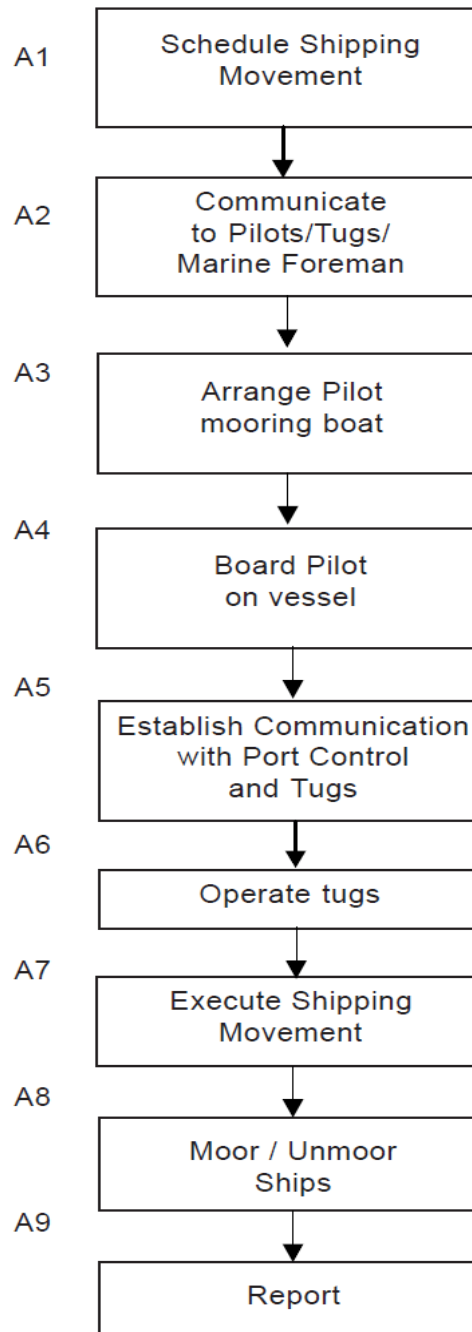


The key process of the MARINE DEPARTMENT are following.

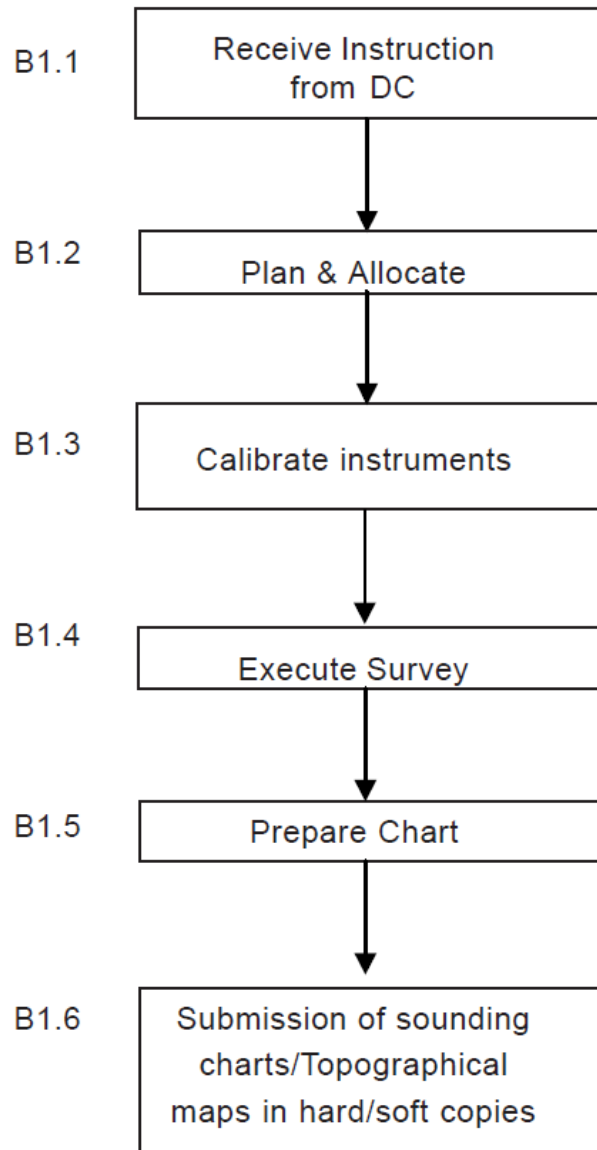
- Shipping Movement.
- Hydrographic Survey
- Possisioning of Buoys
- Dredging Activity
- Port Control Based Communication
- Fire & Emergency
- Pollution Responce
- Oil Cargo Operations

SHIPPING MOVEMENT.



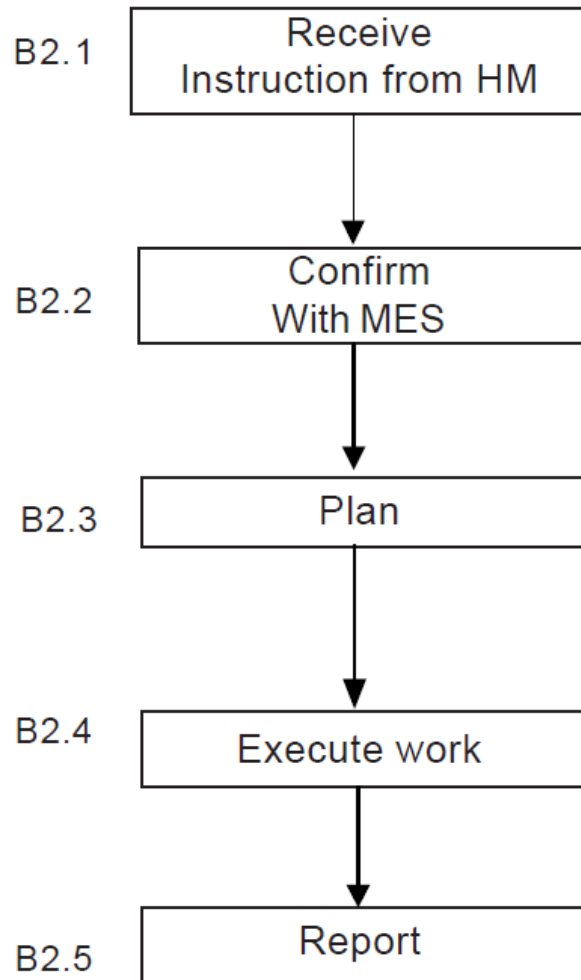
HYDROGRAPHIC SURVEY

Bathymetric & Topographic Survey

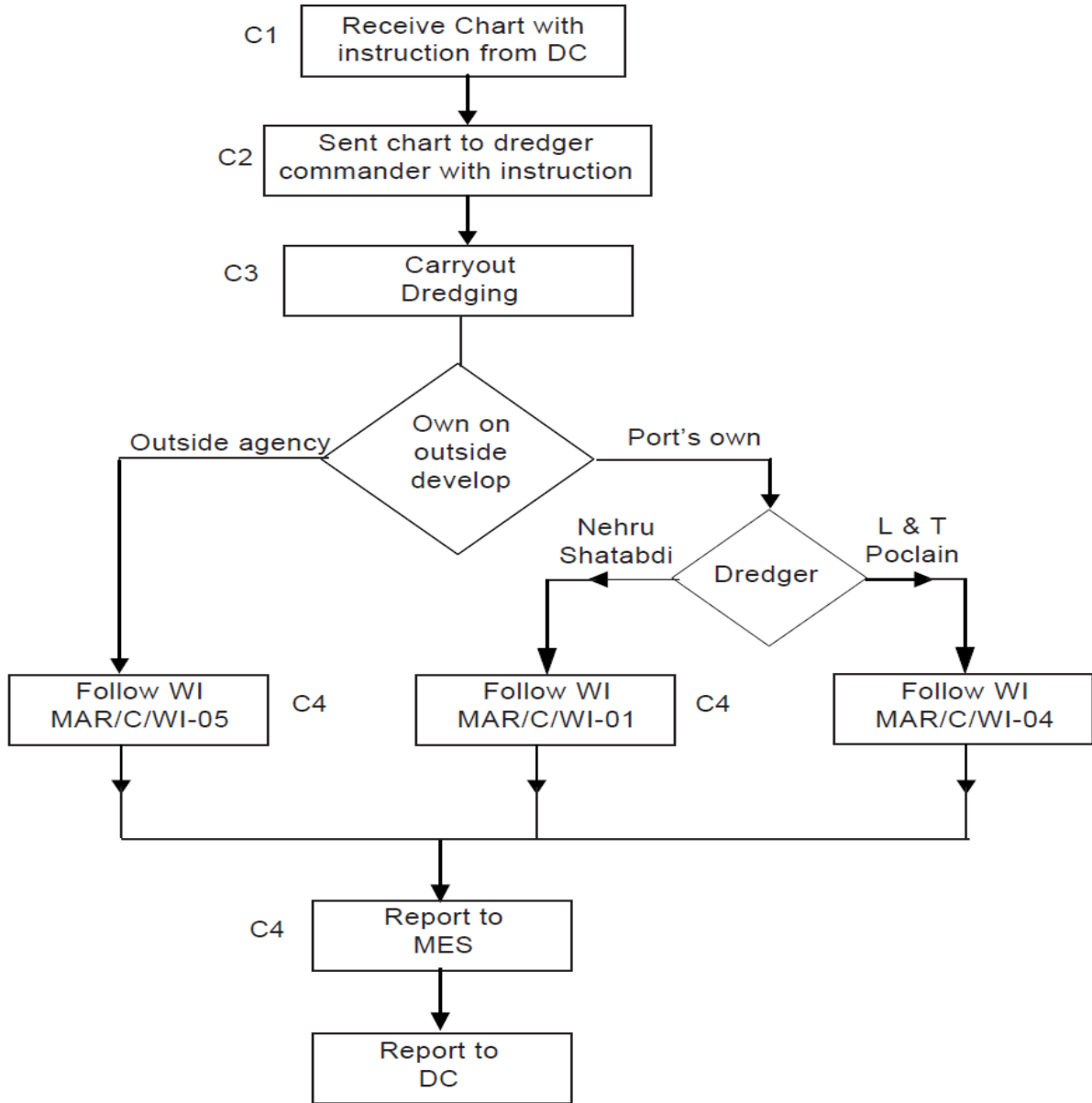


POSSISIONING OF BOYES

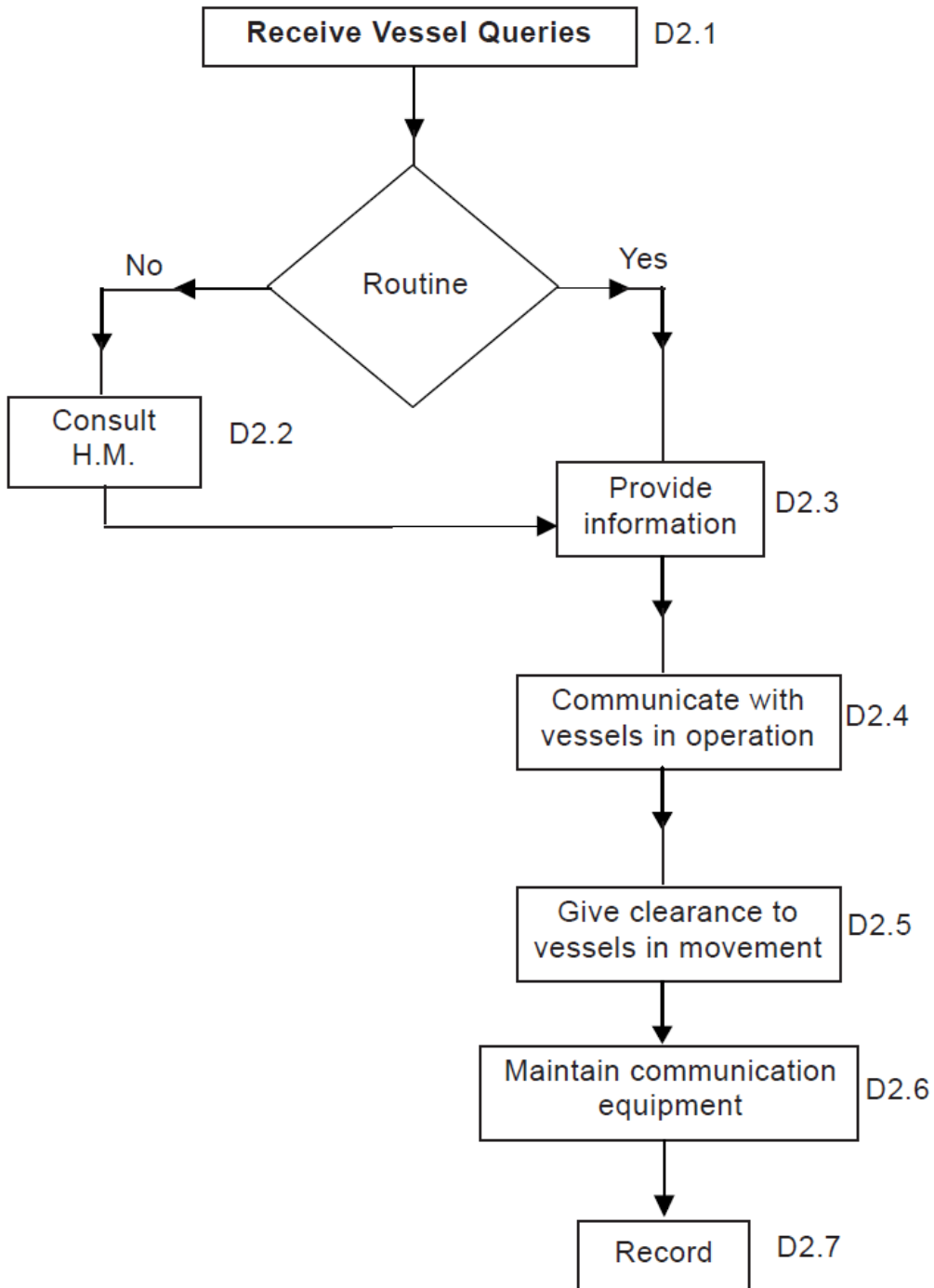
Aligment of Channel Positioning of Bouys



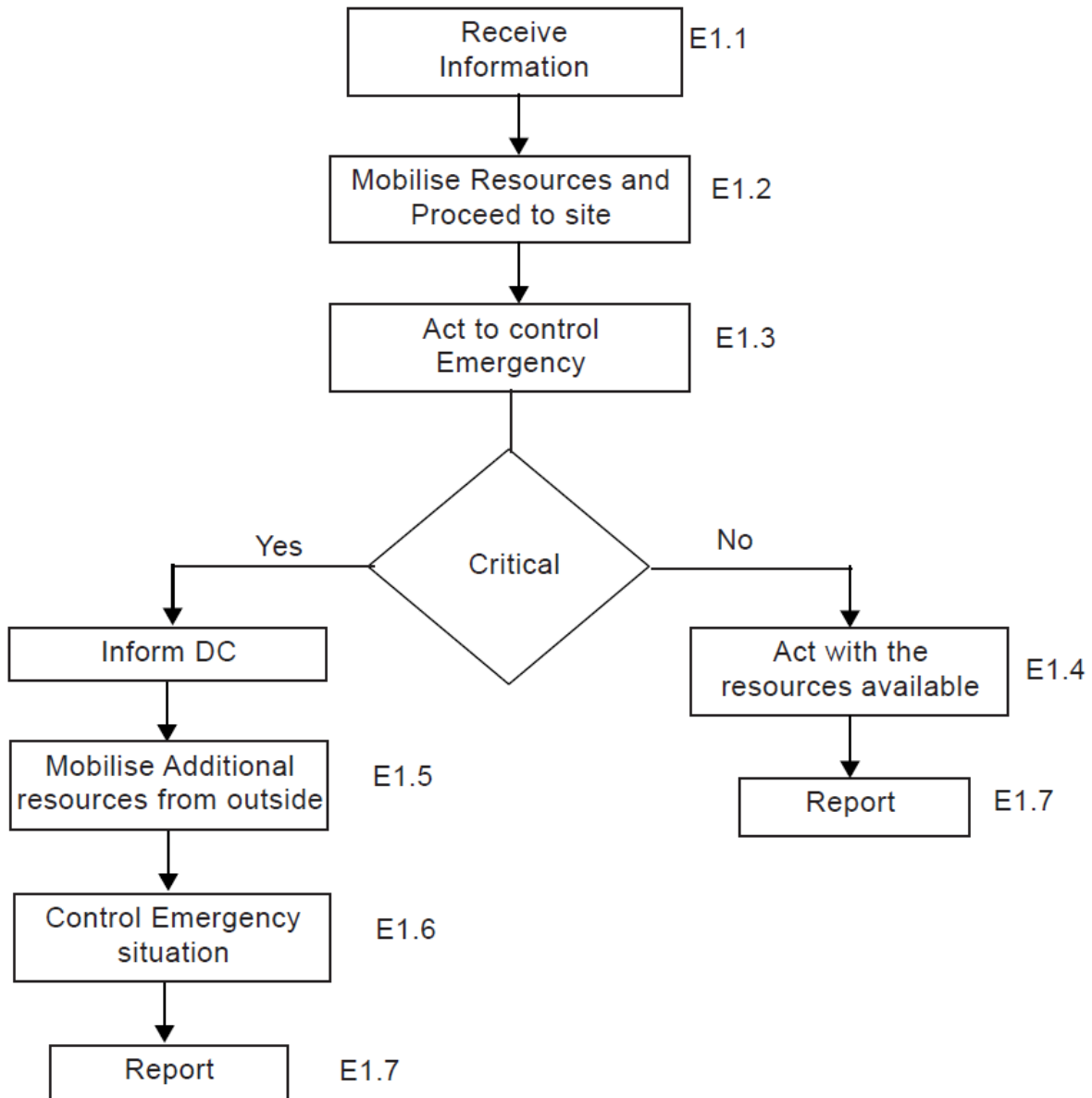
DREDGING ACTIVITY



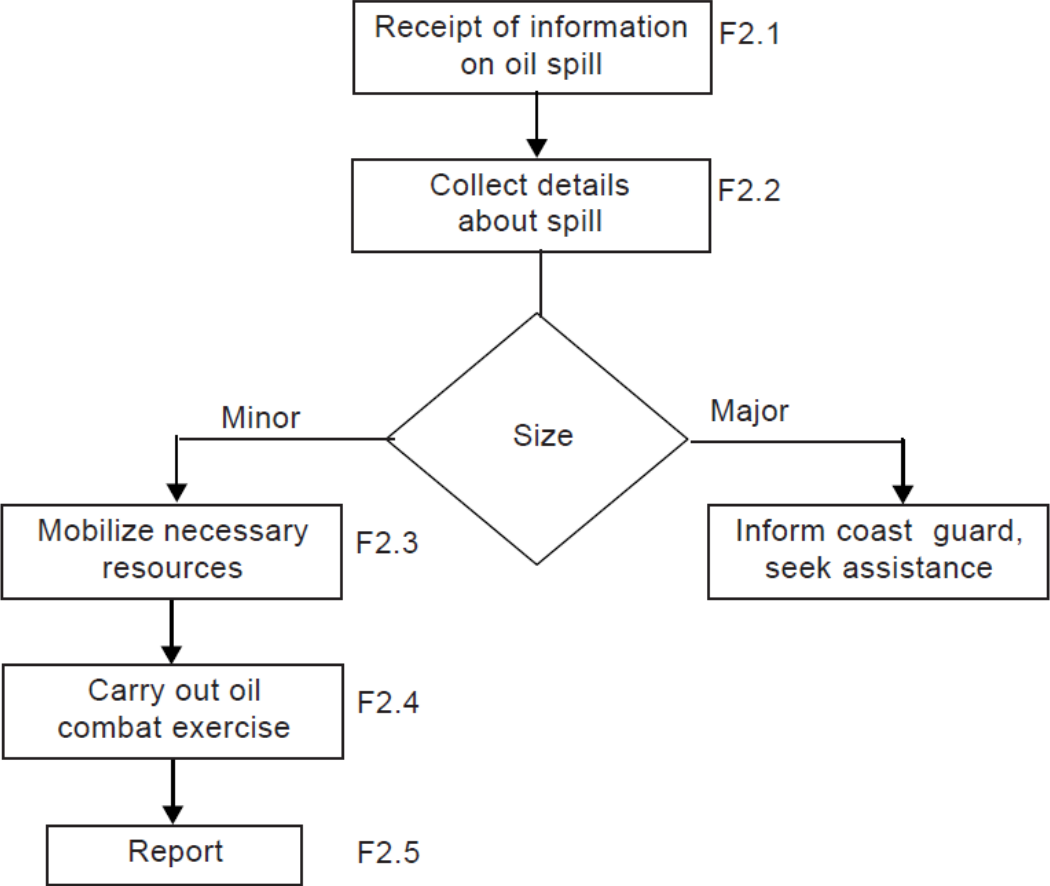
PORT CONTROL BASED COMMUNICATION



FIRE & EMERGENCY



POLLUTION RESPONSE



OIL CRAGO OPERATIONS

Connection/ Disconnection of ULA

